

BCKD₁₈

BC KIDNEY DAYS

**Utilization of Ultrasound and Bioimpedance in Assessment of Dry
Weight for Hemodialysis Patients**

Claire Harris MD, FRCPC

Nephrologist, Vancouver General Hospital

Disclosures

None: No financial support or conflicts of interest

Objectives

- To describe current approaches to **dry weight** assessment
- To review the evidence for **point of care ultrasound** in volume status assessment
- To review the evidence for **bioimpedance** in volume status assessment
- To describe the practical applications of **bioimpedance** and **point of care ultrasound** for dry weight assessment in dialysis
- To review other technology that can assist in **dry weight** determination

Poll Question 1

What is the current use of **point of care ultrasound** for **dry weight assessment** in your dialysis unit?

- a) **Not available**
- b) Available but **never** used
- c) **Occasional** use
- d) **Regular** use
- e) **Integrated into workflow** in dialysis care

[Results](#)

Poll Question 2

What is the current use of **bioimpedance** for **dry weight assessment** in your dialysis unit?

- a) **Not available**
- b) Available but **never** used
- c) **Occasionally** use
- d) **Regular** use
- e) **Integrated into workflow** in dialysis care

[Results](#)



Volume Overload in Dialysis

- Volume overload is **common** in dialysis patients
 - Studies report **20-30%** of hemodialysis (HD) patients do not achieve euvolemia even after dialysis → chronic volume overload
- Volume overload is associated with **high cardiovascular morbidity** and mortality
 - Hypertension
 - LVH and Diastolic Dysfunction
 - Sudden Cardiac Death
- Interdialytic weight gain (IDWG) of **>5-6%** of body weight is similarly associated with adverse outcomes

Fluid removal is not without risk



Excessive ultrafiltration (UF) in HD is associated with:

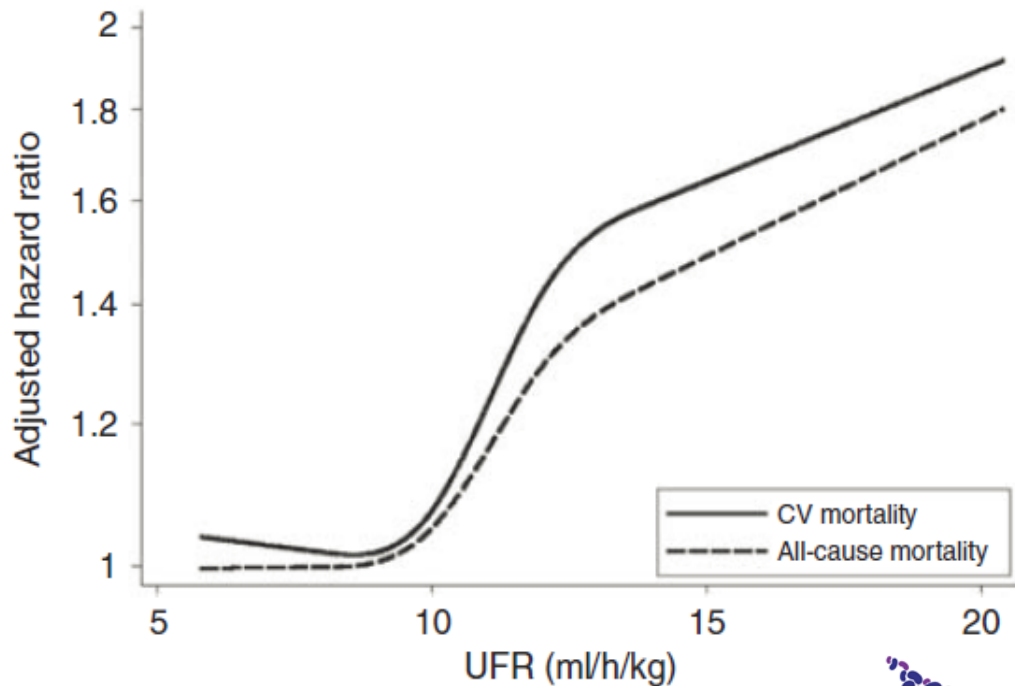
- Intradialytic hypotension
- Myocardial stunning and other end organ ischemia
- Loss of residual renal function
- Increased mortality
- Symptoms – cramping, dizziness, nausea, vomiting
- Impacts on patient quality of life

UF Rate and Adverse Outcomes

- **Higher UF rates** are associated with **higher mortality**
- Effect persists across all subgroups
- Risk increases at rates **>10ml/kg/hr** and is especially high at rates **>13ml/kg/hr**

Flythe JE et al. (KI 2011)

Associations between UFR and CV and all-cause mortality





What's a dry weight?

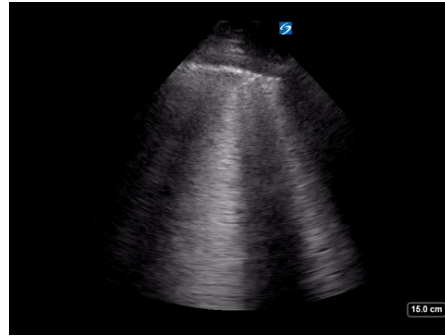
- Defined as **lowest tolerated post dialysis weight** at which there are **minimal** signs or symptoms of hypo or hypervolemia
 - Many prefer term “goal weight” as implies an achievable/realistic target
 - Often involves **trial and error**
- Many have advocated for volume status to be a key marker of dialysis adequacy
 - National Quality Forum endorsed % of pts with UF rate >13 ml/kg/hr as a quality measure but not the target weight itself

There is **no gold standard** in dry weight assessment

Dry Weight Assessment: Conventional Approach



- Blood Pressure  
- Physical Exam
 - Edema, crackles, JVP
- Symptoms
 - Cramping, dizziness etc.
- Limitations of conventional approach
 - Inaccuracy of physical exam findings
 - Exam findings are a late finding and subclinical volume overload is common
 - Inconsistent relationship between HTN and volume overload



POINT OF CARE ULTRASOUND

Point of Care Ultrasound



**Now integrated into
medical education**



**Easy to acquire basic
skills**



**Can use handheld or
full size machines**



**Examination for
volume assessment
can be done in
sitting or supine
patients**



**Can do volume
assessment in under
5 minutes**

Point of Care Ultrasound (POCUS)



POCUS is an evolving tool for assessment of volume status in dialysis and non-dialysis patients



POCUS use in Nephrology varies based on equipment accessibility, physician training and experience



POCUS not covered today:

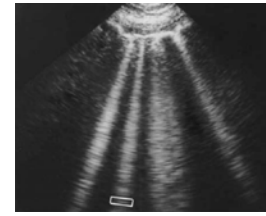
Ultrasound guided CVC insertion

Vascular access – mapping, assessment, needling

Advanced echocardiography

U/S of kidneys or bladder

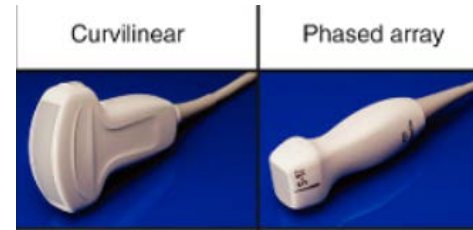
Lung Ultrasound



- Previous thinking: Lung ultrasound is futile because of **highly refractive properties of air** → many artifacts
- In **mid-1980s Lichenstein** and others described how these ultrasound artifacts could be leveraged to identify lung pathology
 - Because interpretation is based on artifacts, it's **non anatomical**
- 2 main uses at point of care:
 1. To rule out **pneumothoraces** by examining the **pleura** → not covered today
 2. To assess lung **parenchyma** by looking for **patterns of artifacts**
 1. **A lines**
 2. **B lines** } Focus for today
 3. Consolidation pattern
 4. Pleural effusions

Lung Ultrasound

- Technique beyond scope of today
- Need **phased array** or **curvilinear** probe to look for A/B lines
- Lungs are examined bilaterally – standard is 4 points on each side aka BLUE protocol (Lichtenstein)
- A **simplified 4 point anterior approach** has been described and is most useful in hemodialysis
- Patient can be in a **supine, semi recumbent** or **sitting** position
- Transducer pointed cephalad



A lines

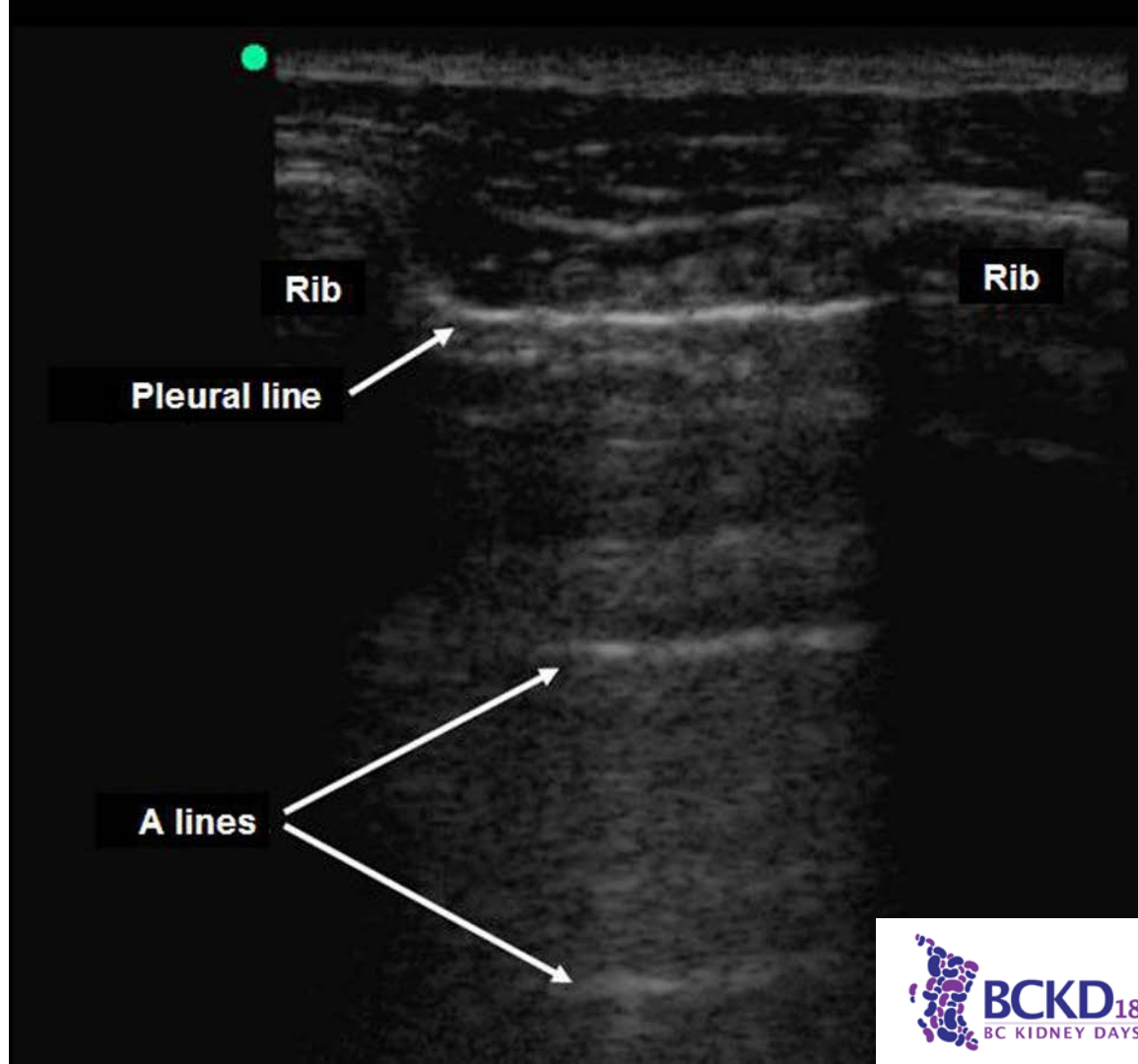
Horizontal, hyperechoic lines created by “reverberation artifact”

Multiple reflections between pleura and transducer create these **equidistant** curvilinear lines

A-line pattern throughout = normal aerated lung

Only need to see **one**

If you see A-line pattern in a dyspneic patient think non-parenchymal i.e. PE, COPD, Neuromuscular disease



B lines

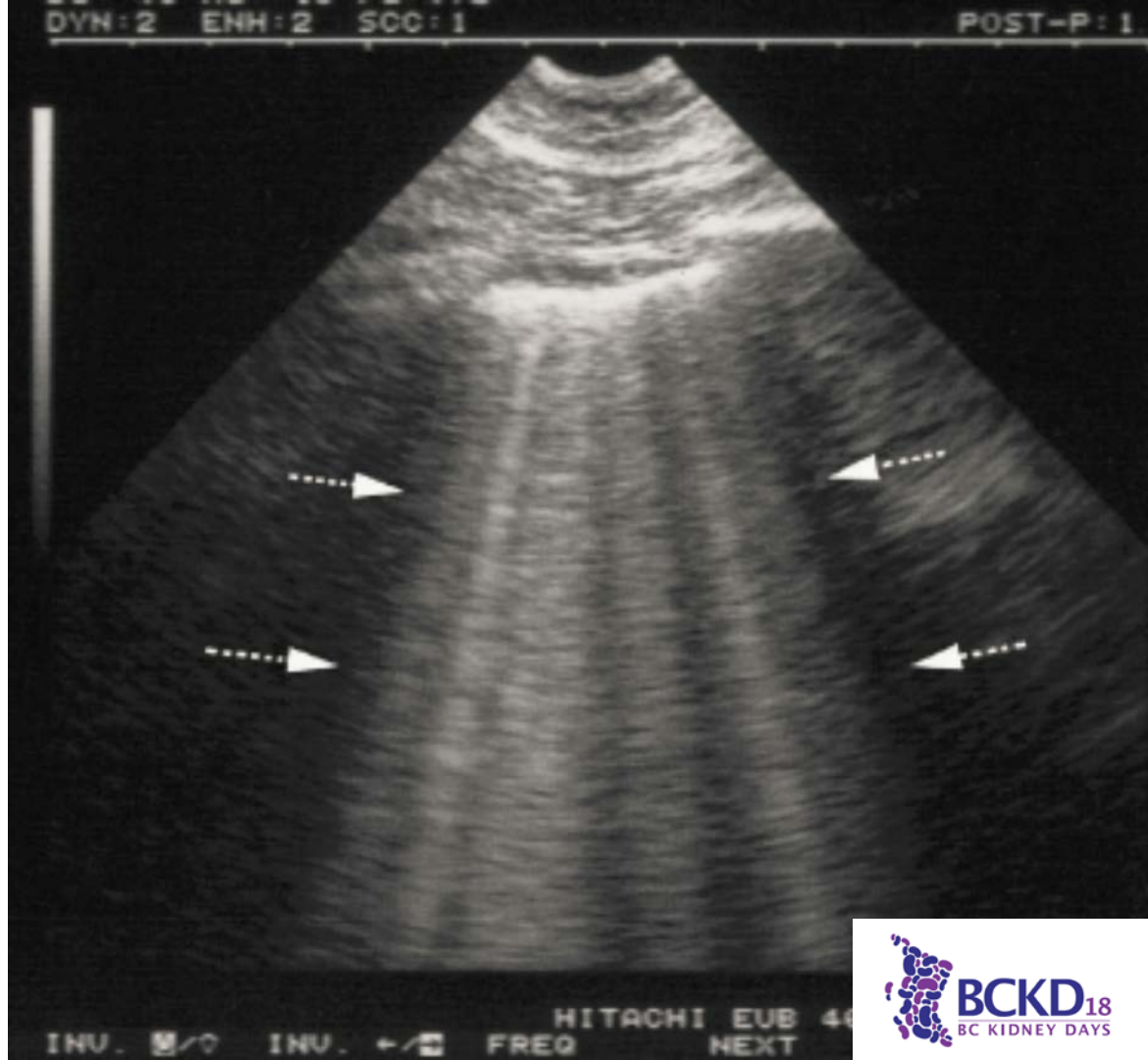
In normal lung, interlobular septa not seen but if widen due to fluid, fibrosis or consolidation, fluid can propagate causing **B lines** to form

B lines = ray-like, hyperechoic, vertical discrete lines which begin at pleural line and extend to bottom of screen

aka Lung **Comets** or **Rockets** or **Lung water**

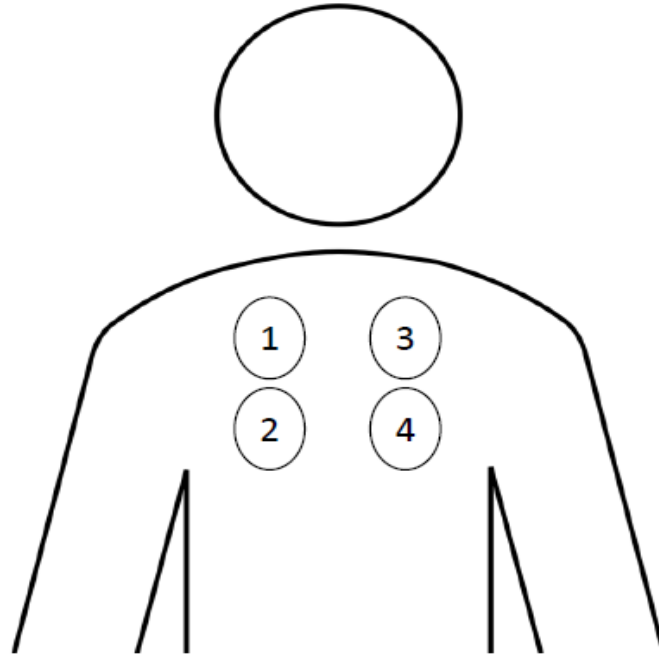
≥3 **B lines** are **pathologic**

“Lung water” is a measure of volume overload, LV function and lung permeability



Simplified Protocol – Lung Ultrasound

- Enghard et al. (Critical Care 2015) described a simplified protocol with similar predictive value
 - L/R 3rd-4th intercostal space; L/R 6th-7th intercostal space (between parasternal and midclavicular line)
- Sum of B-lines to quantify lung water
 - Absent < 5,
 - Mild 5 to < 15
 - Mod 15 to 30
 - Severe > 30



Lung Ultrasound: Evidence

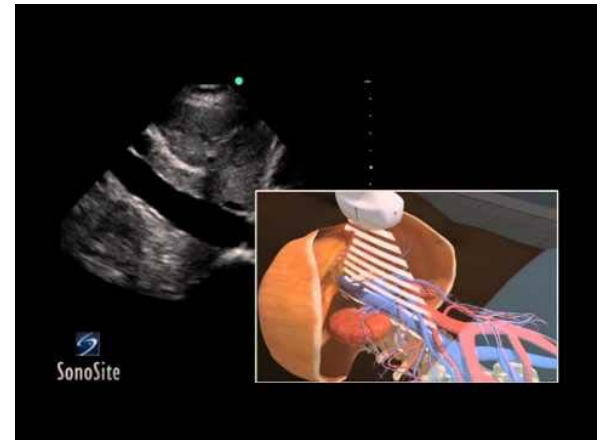
- Lung ultrasound is **more sensitive than Chest x-ray or physical exam** in detecting pulmonary edema, consolidations or pleural effusions
 - B lines can be seen in patients without symptoms of volume overload
- Lichenstein compared ultrasound findings to pulmonary pressures in 102 critical care patients with PA catheters (Chest 2009)
 - **A line pattern** highly correlated with **PA pressure < 13 mmHg** (91% PPV) and <18 mmHg (97% PPV)
- In another study, Lichenstein (Chest 2008) found that presence of **multiple B lines** anteriorly indicated **pulmonary edema** with **97% sensitivity** and **95% specificity** in 64 critical care patients

Lung Ultrasound in Dialysis

- **B lines** are associated with **elevated BNP** levels, **cardiac events** and **mortality** in HD patients
 - Dose-response relationship between number of B-lines and mortality risk: **4.2 fold risk if severe**
- Lung ultrasound is **more sensitive** than crackles on auscultation or pedal edema in HD and PD populations
- **High inter-observer reliability**
- **Similar performance to bioimpedance** in identifying overhydration and predicting cardiac mortality (Siriopol 2013/2016)
- No published data to suggest that use of lung ultrasound for dry weight assessment reduces mortality
 - *“Lung Water by Ultra-Sound Guided Treatment to Prevent Death and Cardiovascular Complications in High-Risk End Stage Renal Disease Patients with Cardiomyopathy” (LUST Trial)* aims to address this question in a high-risk population

Inferior Vena Cava (IVC) Ultrasound

- Obtained through a **subcostal window** of echocardiography using a **phased array** probe or alternatively a **curvilinear probe**
- **IVC collapsibility** (distensibility in ventilated) and **IVC diameter** have been studied extensively in critical care
- Measure size of IVC **2-3 cm** from the IVC/RA junction
- Indications:
 1. To guide fluid management i.e. **volume responsiveness**
 2. **CVP** estimation/approximation
 3. To rule out **cardiac tamponade** physiology
 4. **Right heart failure**



IVC Interpretation

- **Extremes of IVC size are most helpful**
- **CVP estimation (non-intubated patient)**
 - IVC <2cm with >50% variation – correlates to CVP 0-5 mmHg
 - IVC <2cm with some variation (<50%) – correlates to CVP 8 mmHg
 - IVC >2cm with no variation – correlates to CVP of 10-20 mmHg
- **Note: Dilated IVC also seen in cor pulmonale and severe TR**

Patient	Suggest deplete	Suggest replete	Caveats:
Spontaneously Breathing	<1-1.5 cm and very collapsible (>50%)	>2cm, non collapsing	Off axis view
Ventilated, Passive breathing	>12% distensible <1.5 cm	Not distensible >2cm	Spontaneous ventilation

Caveats:

- Ability to predict volume responsiveness outside of mechanically ventilated patients is uncertain
- IVC measurements can be underestimated if view is off-axis
- IVC can be collapsed by manual pressure
- Aorta is often mistaken as the IVC
- Difficult if obese abdomen or bowel gas

IVC Ultrasound Evidence in Dialysis

- Studies in HD have demonstrated **feasibility** and **high inter-rater reliability** even with minimal training (Brennan CJASN 2006, Pazeli Nephron Extra 2014)
- **Supine** and **upright IVC correlate** well making it feasible for patients dialyzing in chairs (Panebianco AJEM 2014)
- IVC diameter **correlates well with bioimpedance** measurements (Tibia MH ASAIO J 2016)
- Studies examining its role in dry weight probing have had mixed results
 - Agarwal et al. reported sub-study of the DRIP trial (CJASN 2011) – IVC diameter was responsive to dry weight probing but its change did not predict the BP response to dry weight probing

Other POCUS techniques

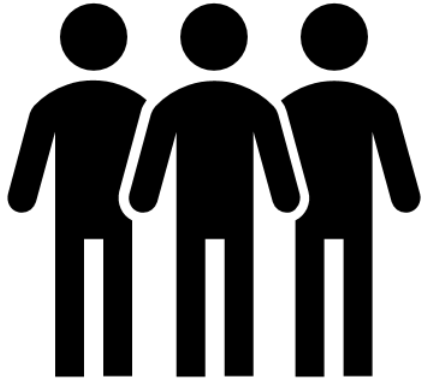
- JVP
 - Ultrasound of internal jugular vein (at 45°) also correlates somewhat with CVP but appears to be less sensitive than other measures (mixed results in literature)
 - Suggest use if cannot reliably assess IVC
- Advanced echocardiography
 - LV function, Stroke Volume determination, pericardial effusions

Practical Tips



- Timing:
 - These findings are **dynamic** → consider effects of performing POCUS pre, during or post dialysis
 - Ex. Collapsible IVC during dialysis could be indicative of hypovolemia OR poor refill!
 - Can get disappearance of B lines by the end of HD
 - Most helpful to do **pre-HD** or at first part of HD run
- Successful integration into clinical practice:
 - Ensure patient privacy
 - Machine available in dialysis unit
 - Findings are documented – consider a flowsheet (continuity and medicolegal)
 - Can compare to previous findings for a given patient
 - Most machines allow you to store and label images

Which dialysis* patients might benefit from POCUS?



- Dyspneic patients
- Dialysis patients with hypo or hypertension
- Difficult dry weight assessment
- New dialysis starts

*Many uses in non-dialysis patients as well



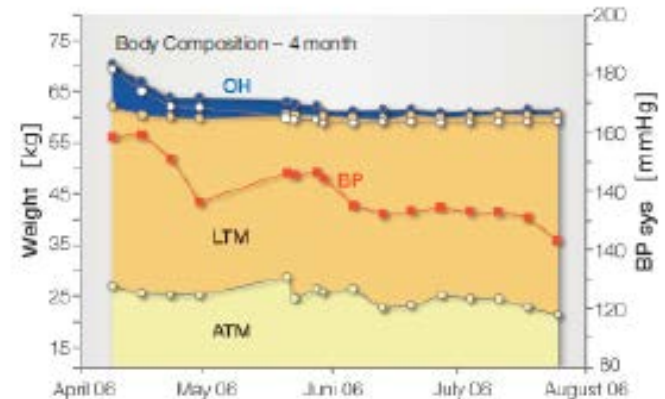
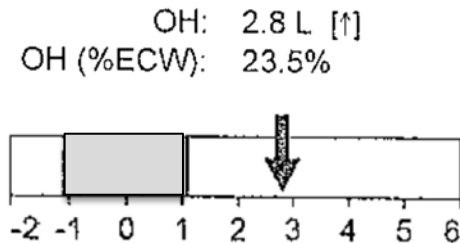
BIOIMPEDANCE

Bioimpedance Analysis (BIA)

- Whole body **bioimpedance spectroscopy** is a technique for assessing (over)hydration and body composition using electrical (usually multifrequency) signals
- Non-invasive, painless, portable, and requires minimal training
- Place electrodes to forearm (non-fistula side) and ipsilateral ankle with patient supine
- Computer software reports analyzes inputs (+ height and weight) into two main outputs:
 - 1. Quantification of Fluid Status**
 - Overhydration
 - Total Body water and Extracellular Water (ECW) → Intracellular Water (ICW) calculated
 - 2. Assessment of Body Composition**
 - Lean tissue mass
 - Adipose tissue mass

BIA Interpretation

- Multiple machines available
 - Ex. Fresenius **Body Composition Monitor (BCM)** is utilizes **multifrequency spectroscopy**
 - Reports **overhydration** status using BIA-derived ECW and ICW volumes and applying normal hydration constants for lean and fat tissue to determine excess or reduced hydration
 - Normal hydration defined as +/- 1L → **Overhydration >1L** (compared to a reference range)
 - OH/ECW index **above or below 15% is abnormal**



BIA in Dialysis: Evidence

- Observational studies have demonstrated a **higher mortality rate** in HD patients with fluid overload to ECW ratio **>15%** (BCM)
 - Studies vary on whether BIA or Lung ultrasound is a better predictor of adverse outcomes but each is an independent predictor of mortality (Siriopol 2013 and 2016)
 - Similar findings in PD population (Emma NDT 2014)
- **HD** - Hur et al. (AJKD 2013) conducted a RCT of 156 HD patients of BIA use to target dry weight (twice monthly measurement) along with echo and ambulatory BP
 - Authors observed improvements in fluid status by BIA in intervention but not control group along with regression of LV mass, left atrial volume index, blood pressure and arterial stiffness
- **PD** - Luo et al (Blood Purif 2011) RCT of 160 CAPD patients to target goal weight, reduction in hydration status and BP in the intervention
- Ongoing trials looking at residual renal function, hospitalizations, mortality

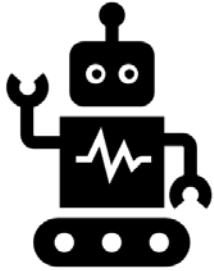
Bioimpedance Limitations



- Only small trials available at present
- Normal reference range may less applicable to dialysis pts. (healthy ppl)
 - Unclear if reference range applies to elderly persons with sarcopenia
- Absolute Contraindications:
 - Pacemaker or defibrillator
 - Pregnancy
- Relative Contraindications:
 - Artificial joints, pins
 - Amputations
- What about PD? Does PD fluid in abdomen affect the results?
 - No significant difference! (Caron-Linert et al. PDI, 2014)

Technique Comparison

	POCUS	Bioimpedance
Who performs it	Typically MD	RN or RD
When to perform	Anytime, preferably pre-HD	Usually prior to HD PD anytime
Time to perform	< 5 minutes	< 5 minutes
Limitations	Operator dependent	Contraindications
Additional information	Cardiac function	Body composition
Evidence in Dialysis population	Yes but need more hard endpoints	Yes but need more hard endpoints



OTHER TOOLS FOR DRY WEIGHT ASSESSMENT

Relative Plasma Volume (RPV) Monitoring

- Uses optical transmission to measure **intradialytic change in hematocrit** in real time (mixed evidence)
 - **Slope** is a function of **UF rate** and **plasma refill**
 - RPV was associated with worse outcomes than usual care in CLIMB trial (Reddan et al. JASN July 2005) but many flaws in trial
 - RPV may be a useful adjunct in clinical assessment of dry weight
 - Retrospective analysis DRIP trial – flat RPV curves were helpful to predict volume overload, response to dry weight reduction and improvement in BP with dry weight reduction (Sinha et al. Hypertension 2010)
 - UF Control Biofeedback using blood volume monitoring did not change IDH, UF rates, bioimpedance measures (Leung et al. CJASN 2017)



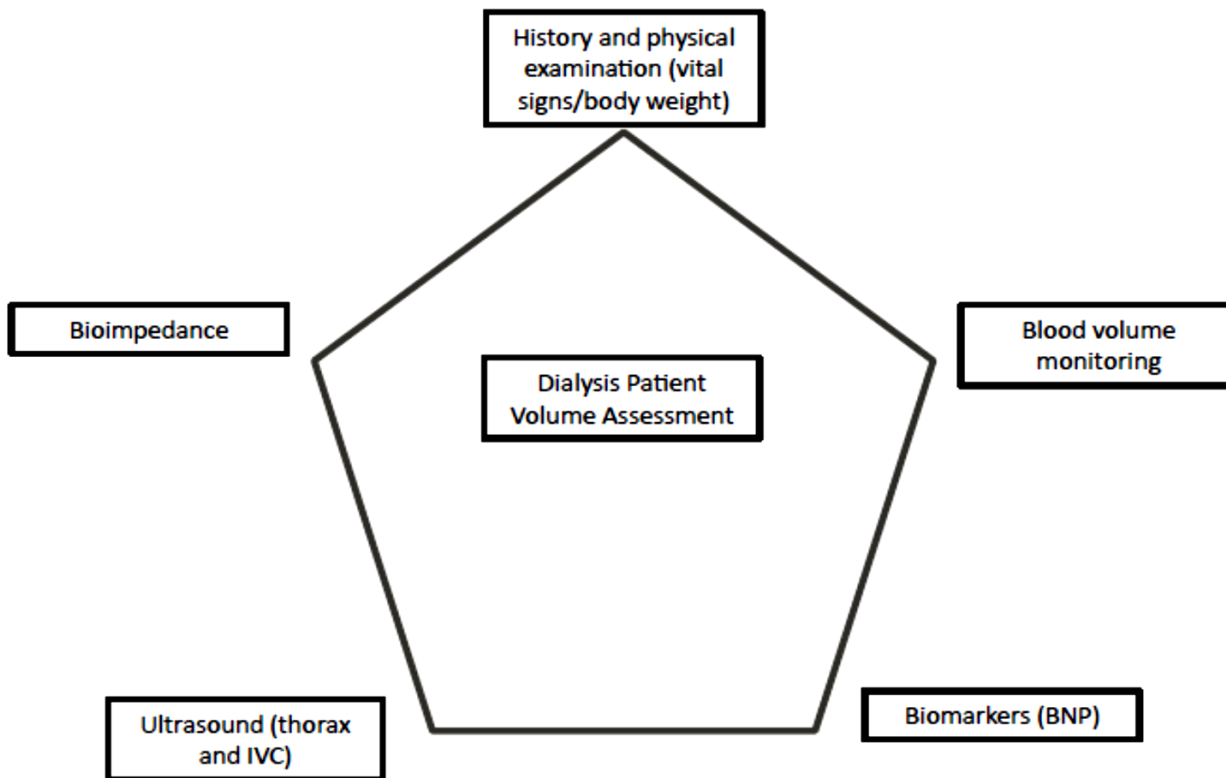
Biomarkers and Dry Weight

- Both BNP and N-terminal proBNP have been proposed as markers of volume overload in dialysis
- Known to be strong markers of cardiovascular events and mortality in dialysis patients
- Levels are also markers of LV dysfunction and LV mass which makes interpretation challenging
- Elevated levels also correlated to low BMI and malnutrition
- Levels do not appear to decline with dry weight probing (Agarwal NDT 2013)

Bottom Line: No clear role at present in dry weight assessment

Proposed approach

Rosner MH, Ronco C.
Semin Dial. 2014





Conclusions

- Volume overload is an important contributor to adverse outcomes in dialysis pts.
- POCUS and Bioimpedance are useful tools for dry-weight assessment in dialysis patients and can be complementary in practice
- Further evidence will help determine whether they improve hard endpoints
- Many courses available and techniques are easy to learn
 - Learn more about bioimpedance in the Dietician breakout session
 - Ultrasound resources to follow – ask me if you have questions!
- Remember to always **put information in clinical context**, these are just adjuncts to your clinical judgement

Resources for Education - POCUS

- CPOCUS – course and certification information
 - www.cpocus.ca
- BCPOCUS – course information, fellowships
 - www.bcpocus.ca/education
- Western Sono – video tutorials and course information
 - www.westernsono.ca
- National Kidney Foundation – yearly course at Spring meeting
 - www.kidney.org
- Textbook – Soni NJ, Arntfield R, Kory P. Point-of-Care Ultrasound, Elsevier, 2015.

claire.harris@vch.ca

QUESTIONS?



References

- Ohashi Y, Sakai K, Hase H, Joki N. Dry weight targeting: The art and science of conventional hemodialysis: *Semin Dial.* 2018;00:1-6.
- Passauer J, Petrov H, Schleser A, Leicht J, Pucalka K. Evaluation of clinical dry weight assessment in haemodialysis patients using bioimpedance spectroscopy: a cross-sectional study. *Nephrol Dial Transplant.* 2010;25:545-551.
- Wabel P, Moissl U, Chamney P, et al. Towards improved cardiovascular management: the necessity of combining blood pressure and fluid overload. *Nephrol Dial Transplant.* 2008;23:2965-2971.
- Flythe JE, Kimmel SE, Brunelli SM. Rapid fluid removal during dialysis is associated with cardiovascular morbidity and mortality. *Kidney International.* *Kidney International* (2011) 79, 250–257
- Assimon MM, Wenger JB, Wang L, Flythe JE. Ultrafiltration Rate and Mortality in Maintenance Hemodialysis Patients. *Am J Kidney Dis.* 68(6):911-922.
- Rosner MH, Ronco C. Techniques for the Assessment of Volume Status in Patients with End Stage Renal Disease. *Semin Dial.* 2014;27(6):538-541
- Soni NJ, Arntfield R, Kory P. Point-of-care ultrasound. Saunders. 2015, Philadelphia, PA.
- Lichtenstein DA. BLUE-Protocol and FALLS-Protocol Two Applications of Lung Ultrasound in the Critically Ill. *CHEST.* 2015; 147 (6):1659-1670.
- Martindale JL1, Noble VE, Liteplo A. Diagnosing pulmonary edema: lung ultrasound versus chest radiography. *Eur J Emerg Med.* 2013 Oct;20(5):356-60.
- Enghard P, Rademacher S, Nee J et al. Simplified lung ultrasound protocol shows excellent prediction of extravascular lung water in ventilated intensive care patients. *Critical Care* (2015) 19:36

References

- Xirouchaki N, Magkanas E, Vaporidi K et al. Lung ultrasound in critically ill patients: comparison with bedside chest radiography. Intensive care. Intensive Care Med. 2011 Sep;37(9):1488-93.
- Lichtenstein DA, Meziere GA. Relevance of lung ultrasound in the diagnosis of acute respiratory failure: the BLUE protocol. Chest. 2008; 134(1):117-25.
- Lichtenstein DA, Mezière GA, Lagoueyte JF, Biderman P, Goldstein I, Gepner A. A-lines and B-lines: lung ultrasound as a bedside tool for predicting pulmonary artery occlusion pressure in the critically ill. Chest. 2009;136(4):1014-1020.
- Zoccali C, Torino C, Tripepi R et al. Pulmonary congestion predicts cardiac events and mortality in ESRD. J Am Soc Nephrol 2013; 24: 639–646
- Mallamaci F, Benedetto FA, Tripepi R et al. JACC Cardiovasc Imaging 2010;3(6):586-94.
- Torino C, Gargani L, Sicari R. The Agreement between Auscultation and Lung Ultrasound in Hemodialysis Patients: The LUST Study. Clin J Am Soc Nephrol. 2016 Nov 7;11(11):2005-2011. Epub 2016 Sep 22.
- Siriopol D, Hogas S, Voroneanu L et al. Predicting mortality in hemodialysis patients: a comparison between lung ultrasonography, bioimpedance data and echocardiography parameters. Nephrol Dial Transplant. 2013 Nov;28(11):2851-9.
- Siriopol D, Voroneanu L, Hogas S et al. Bioimpedance analysis versus lung ultrasonography for optimal risk prediction in hemodialysis patients. Int J Cardiovasc Imaging. 2016 Feb;32(2):263-70.
- Brennan JM, Ronan A, Goonewardena S. Handcarried Ultrasound Measurement of the Inferior Vena Cava for Assessment of Intravascular Volume Status in the Outpatient Hemodialysis Clinic. Clin J Am Soc Nephrol 1: 749–753, 2006.

References

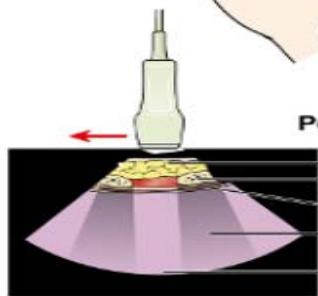
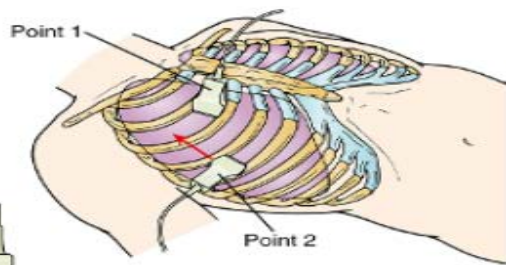
- Panebianco NL, Shofer F, Cheng A, Fischer J, Cody K, Dean AJ. The effect of supine versus upright patient positioning on inferior vena cava metrics. *Am J Emerg Med.* 2014 Nov;32(11):1326-9.
- Tiba MH, Belmont B, Heung M et al. Dynamic Limb Bioimpedance and Inferior Vena Cava Ultrasound in Patients Undergoing Hemodialysis. *ASAIO J.* 2016 Jul-Aug;62(4):463-9.
- Agarwal R, Bouldin JM, Light RP, Garg A. Inferior vena cava diameter and left atrial diameter measure volume but not dry weight. *Clin J Am Soc Nephrol.* 2011 May;6(5):1066-72.
- Pazeli M, Vidigal F, Grossi C et al. Can Nephrologists Use Ultrasound to Evaluate the Inferior Vena Cava? A Cross-Sectional Study of the Agreement between a Nephrologist and a Cardiologist. *Nephron Extra.* 2014 Apr 30;4(1):82-8.
- Davies SJ, Davenport A. The role of bioimpedance and biomarkers in helping to aid clinical decision-making of volume assessments in dialysis patients. *Kidney International.* *Kidney International (2014) 86, 489–496*
- Caron-Lienert RS, Figueiredo AE, da Costa BP, et al. Evaluation of Body Composition and Fluid Volume Using a Body Composition Monitor: Does Intraperitoneal Fluid Matter? *Peritoneal Dialysis International : Journal of the International Society for Peritoneal Dialysis.* 2014;34(4):456-458. doi:10.3747/pdi.2013.00102.
- Luo Y, -J, Lu X, -H, Woods F, Wang T: Volume Control in Peritoneal Dialysis Patients Guided by Bioimpedance Spectroscopy Assessment. *Blood Purif* 2011;31:296-302. doi: 10.1159/000322617
- Sinha AD, Light RP, Agarwal R. Relative plasma volume monitoring during hemodialysis aids the assessment of dry-weight. *Hypertension.* 2010;55(2):305. doi:10.1161/HYPERTENSIONAHA.109.143974.



SUPPLEMENTAL SLIDES

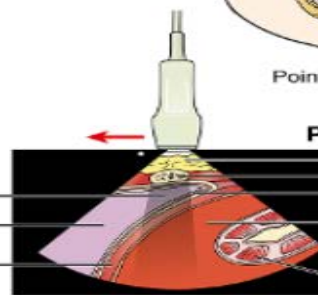
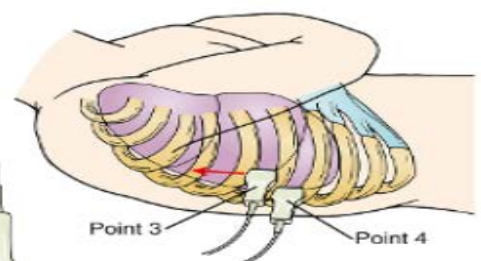
Lung Ultrasound: How-to

- Set Up:
 - “**Lung**” setting if available or “**Abdo**”
 - Depth set to least **7.5-10 cm** anteriorly and 10-15 cm laterally and posteriorly
 - Transducer marker should **point to the patients head**
 - Images displayed to the **LEFT** of the screen are **CEPHALAD**
- Probe Selection
 - Select the **phased array** or **curvilinear** probes
 - **Linear** transducer can be used to look for **lung sliding**
- Patient Positioning
 - Patient can be in a supine, semi recumbent or sitting position
 - Lungs are examined bilaterally – standard is 4 points on each side
- Note: For optimal imaging – transducer should be perpendicular to pleural surface



Points 1 and 2

- Soft tissue
- Rib
- Pleura
- Rib shadow
- Lung



Points 3 and 4

- Rib shadow
- Lung
- Diaphragm

- Soft tissue
- Rib
- Pleura
- Liver (right)/ Spleen (left)
- Kidney

