

BLEEDING FISTULA OR GRAFT: WHAT TO DO

It is very rare for your fistula or graft to bleed after you leave the dialysis unit. This brochure tells you what to do if it does happen.

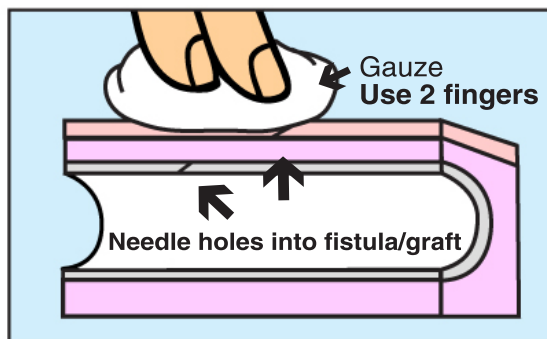
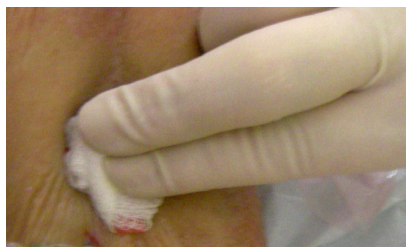
What supplies do I need in case my needle sites bleed at home?

- Gauze pads
- Tape
- Gloves
- Tourniquet (e.g., belt, tie, blood pressure cuff – required only if bleeding profusely or squirting).

Keep these supplies in your emergency kit.

What do I do if my fistula or graft starts to bleed after I leave the dialysis unit?

1. Call for help! Let your family member(s), friend(s) or neighbor(s) know.
2. Get emergency kit, put on gloves and open gauze. If you do not have gauze handy, use an absorbent cloth, tissues or paper towel.
3. Press firmly for 10-15 minutes, and refrain from peeking under your fingers.
4. Make sure you press the bleeding needle hole with two fingers to put pressure on both the site where the needle enters the skin and the site where it enters the fistula/graft.
5. If the bleeding stops, apply a band aid (and let your nurse know on your next run).
6. If the bleeding doesn't stop after 15 minutes, call 911.
7. Elevate the fistula/graft arm.
8. If bleeding a lot or squirting, apply a tourniquet (belt, tie, BP cuff etc) tightly around your upper arm while waiting for the ambulance.



How to hold pressure over the needle hole

The information in this pamphlet is provided for educational/information purposes, and to support discussion with your health care team about your medical condition and treatment. It does not constitute medical advice and should not substitute for advice given by your physician or other qualified health care professional. This brochure can be downloaded from the BC Renal Agency website: www.bcrenalagency.ca