

2014

BC Renal Agency Update
Dr. Adeera Levin, Executive Director



Welcome to
BC Kidney
Days 2014!

Overview

- What is kidney care in BC and the role of the BC Renal Network
- Review of accomplishments
- Congratulations and new faces

BCPRA Vision and Mission

Vision

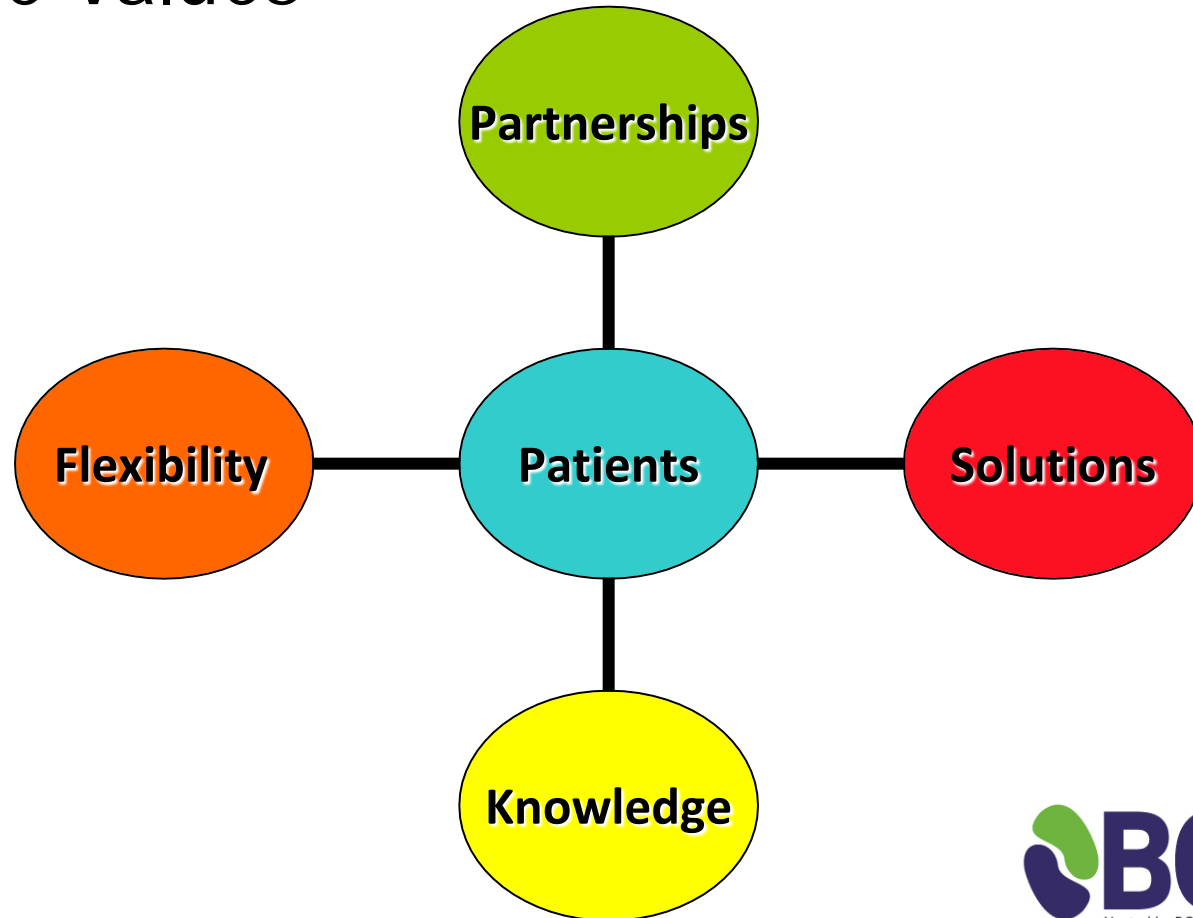
- *An innovative, integrated health system resulting in outstanding care for patients living with kidney disease.*

Mission

- *Integrating knowledge and practice for better kidney health*

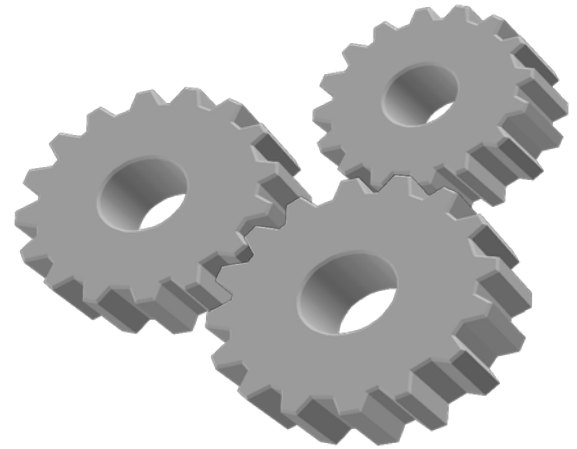


Core Values



Inter-related strategies to improve patient outcomes

1. Public awareness
2. Professional education
3. Policy influence
4. Care delivery systems
5. Research
 - Basic
 - Clinical
 - Outcome-based



What is Kidney Care in BC?

Focused on:

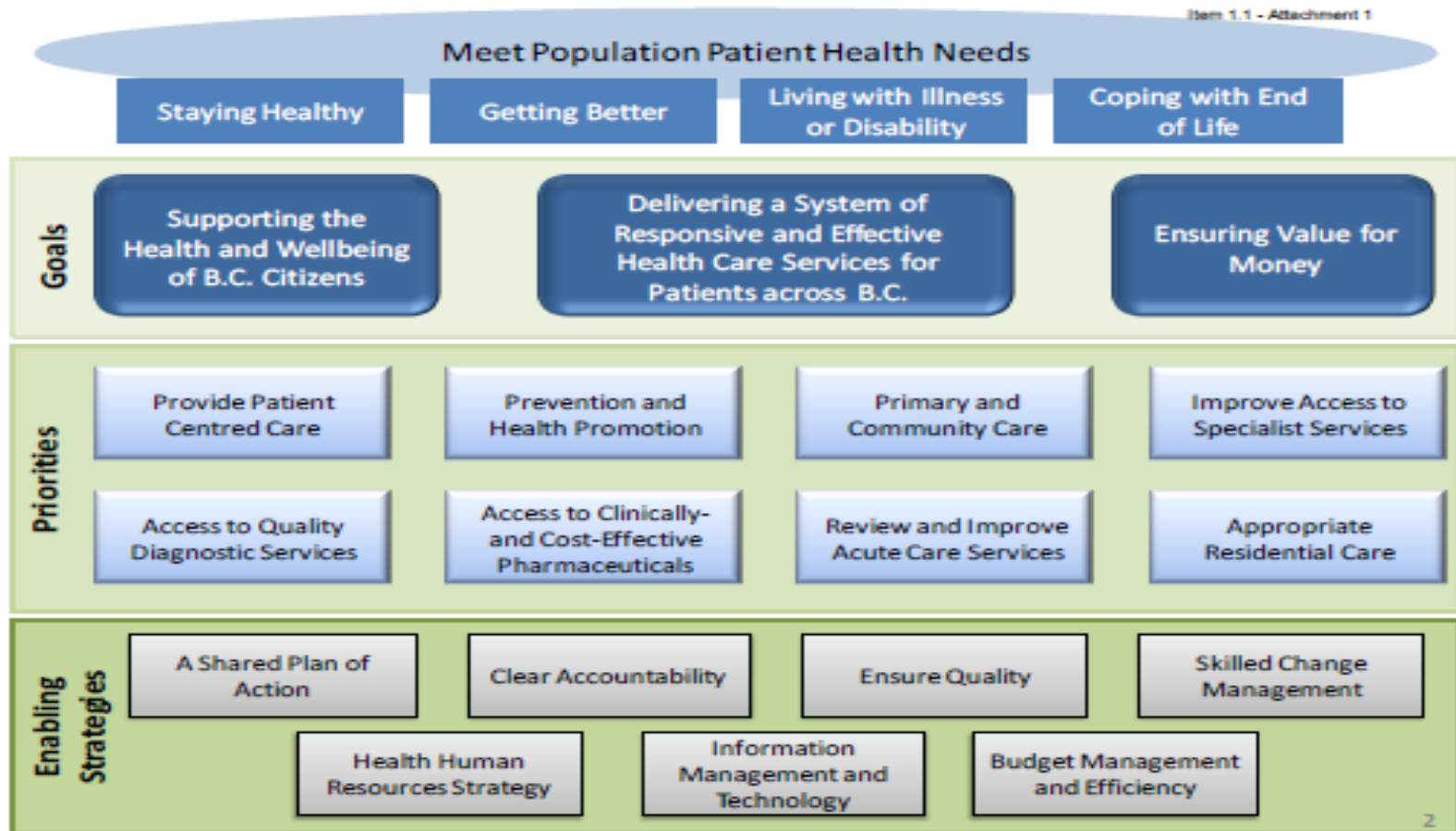
- Patients first
- Optimal care
- System redesign/system sustainability
- Knowledge generation and application



Unique in
Canada &
Internationally

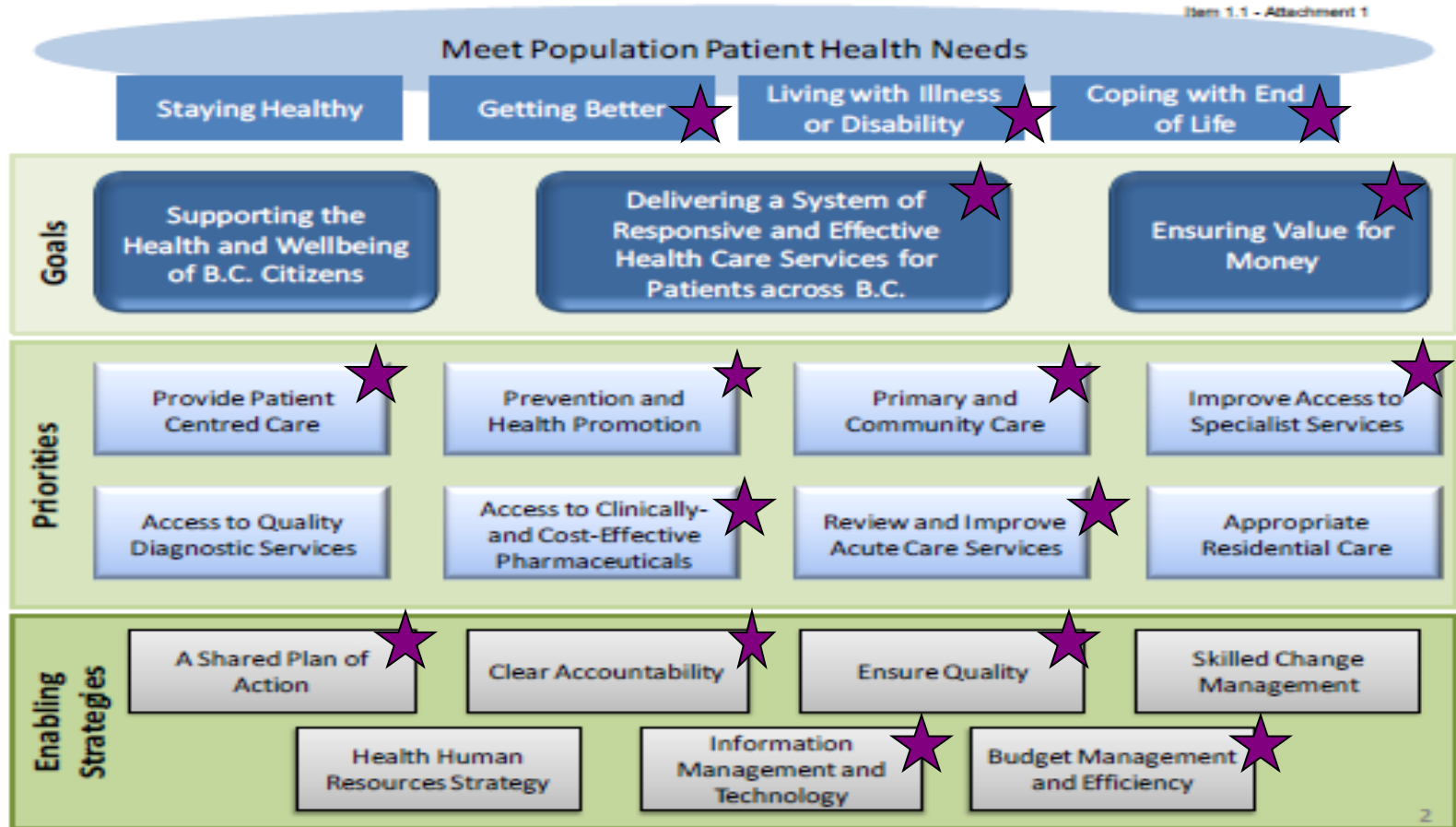
MOH strategic goals and priorities

Item 1.1 - Attachment 1



Renal Agency alignment with MOH

Item 1.1 - Attachment 1



MOH strategic goals and priorities

Item 1.1 - Attachment 1

Meet Population Patient Health Needs

Staying Healthy

Getting Better

Living with Illness
or Disability

Coping with End
of Life

EOL

Goals

Supporting the
Health and Wellbeing
of B.C. Citizens

Delivering a System of
Responsive and Effective
Health Care Services for
Patients across B.C.

Ensuring Value for
Money

Kidney Smart and GP engagement

Renal Funding Model

Priorities

Provide Patient
Centred Care

Prevention and
Health Promotion

Primary and
Community Care

Improve Access to
Specialist Services

PD Assist/ HHD

CKD Care

PD Assist /HHD/Pharmacy

VA, GN and Tx

Access to Quality
Diagnostic Services

Access to Clinically-
and Cost-Effective
Pharmaceuticals

Review and Improve
Acute Care Services

Appropriate
Residential Care

Formulary & GN Formulary VA / Telehealth

Enabling
Strategies

A Shared Plan of
Action

Clear Accountability

Ensure Quality

Skilled Change
Management

Health Human
Resources Strategy

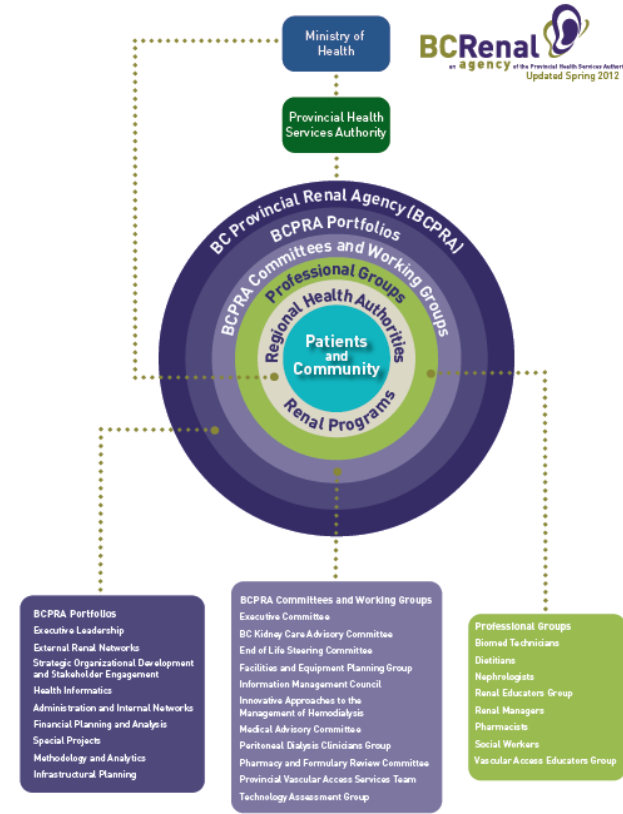
Information
Management and
Technology

Budget Management
and Efficiency

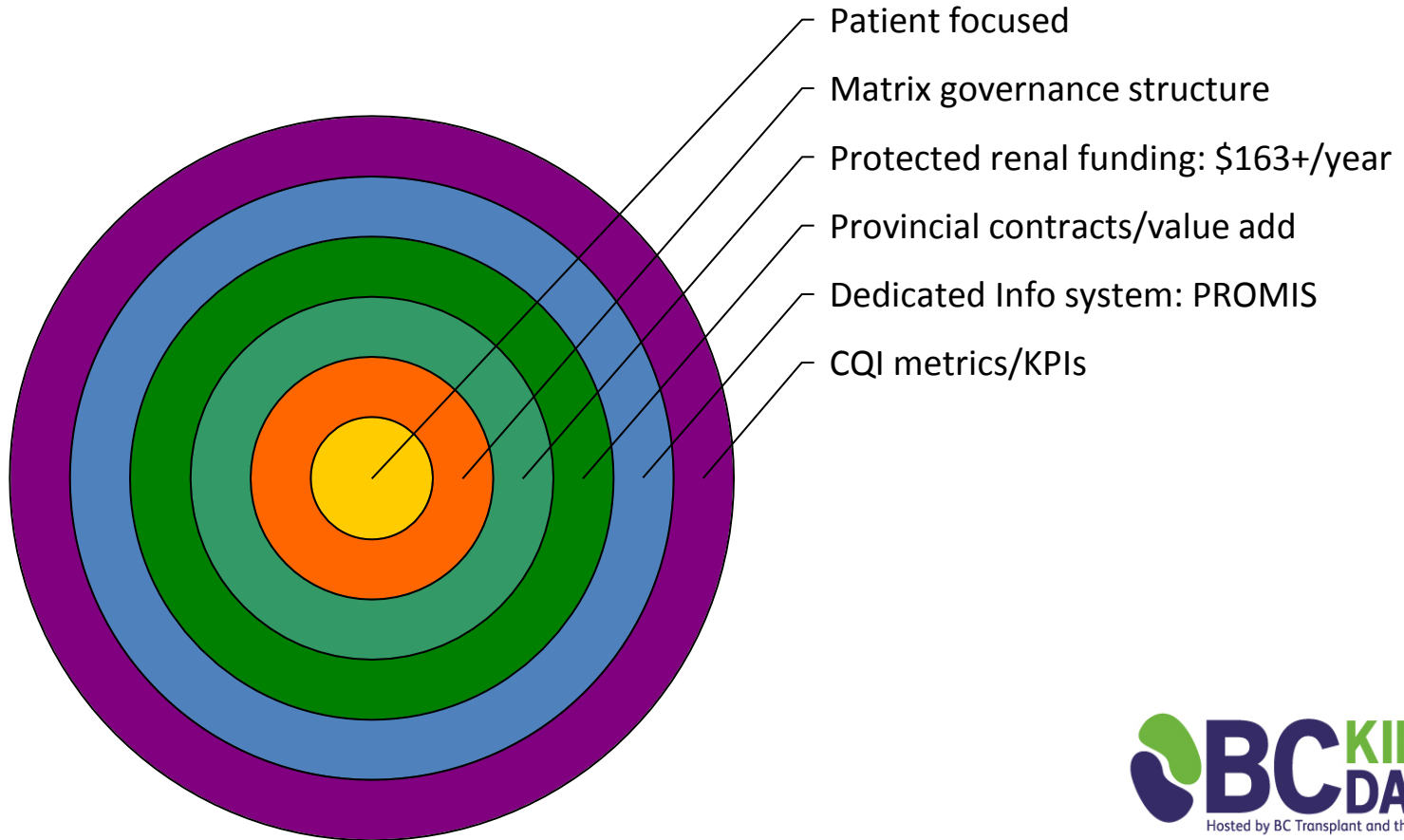
Form follows function:

Patients are the raison d'être

- Patients at centre of org chart
- HAs have operational responsibility for program delivery
- BCPRA overarching support for those programs, and accountable to PHSA & MOH for outcomes



Why the network works

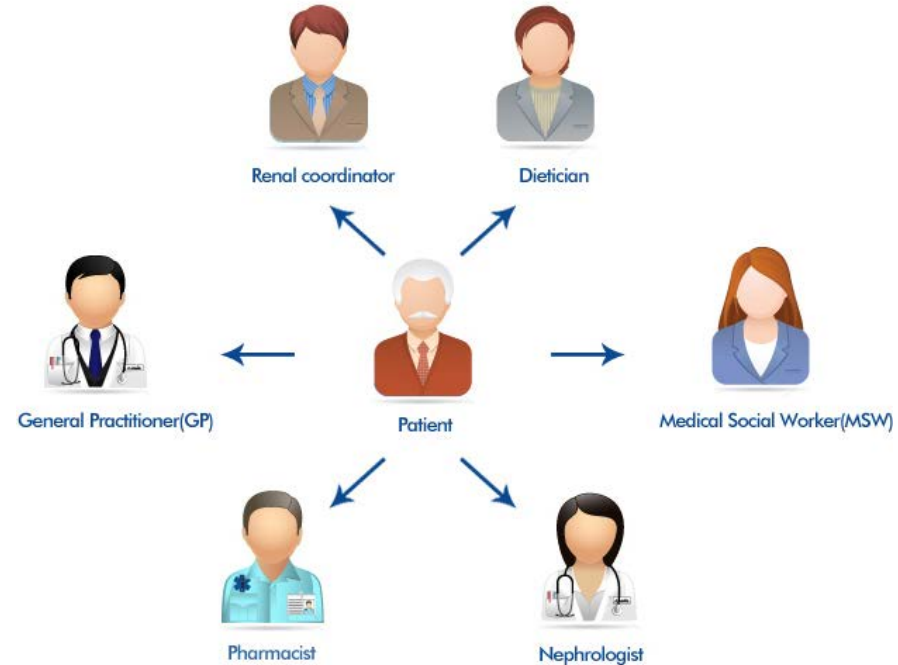


Patient perspective

- Getting to appointments
- Understanding the system & treatment options
- Managing the disease
- Understanding medications
- Improving pain and symptom control

Care team perspective

- Timely ID/referral
- Delaying progression
- Modality selection/timing (incl. Tx referral)
- Continuity of care and transitions over time



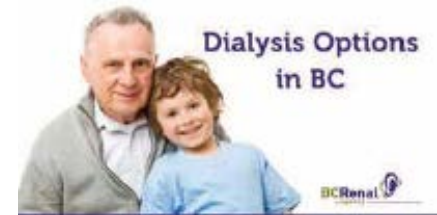
Solutions

- Understand disease processes
- Implement best practices
- Generate new knowledge
- Create systems and teams that address important patient problems

Living the words...

Patients First

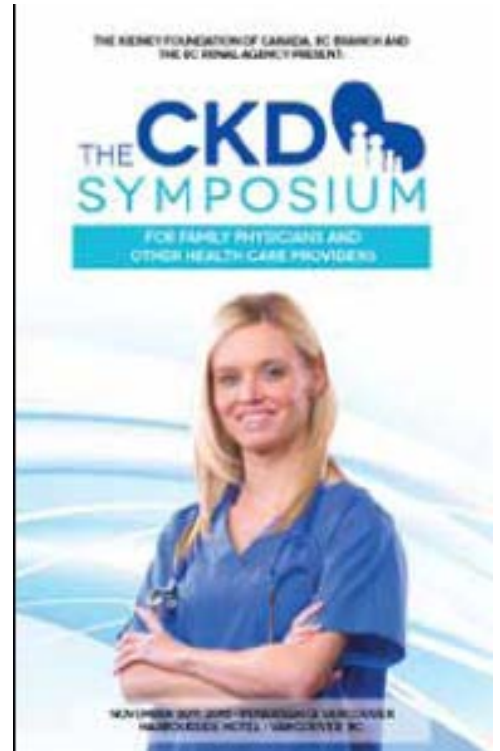
- Activity-based funding: \$\$ follow patient
- Expanded extended dialysis options:
 - Home-based
 - Facility-based NC
- Standardized CKD care and provincial education strategy



Living the words...

Optimal Care

- Early identification and GP education
- Province-wide protocols and strategies
 - Kidney Care Advisory Committee: best practices in care and education
 - Vascular access
 - Modality selection and education



| Increase access to care for kidney patients | 2004 | 2014 | Average increase per year | 10-year increase |
|---|-------|--------|---------------------------|------------------|
| CKD / pre-dialysis | 4090 | 12,998 | 13% | 207% |
| Hospital-based hemodialysis | 975 | 1,219 | 2% | 32% |
| Community-unit hemodialysis | 601 | 834 | 3% | 35% |
| Home-based hemodialysis | 23 | 137 | 32% | ----- |
| Facility independent nocturnal hemodialysis | — | 29 | 69% | — |
| Facility dependent nocturnal hemodialysis | — | 25 | 14% | — |
| Peritoneal dialysis | 607 | 791 | 3% | 34% |
| Total dialysis | 2,206 | 3,066 | 3% | 41% |

2013/14 Provincial Initiatives

Core Value(s)

Kidney Care Advisory Cmttee:

- best practices guideline for KCCs
- new GP info sheet re: common prescribing questions
- first draft guideline for anxiety/depression

- Optimal Care
- Patients

Patient Education Initiative

- standardized online CKD learning tool – Fall 2014 launch

- Patients
- Knowledge

Aboriginal Health: TeleRenal Initiative (Phase 1)

- Optimal Care
- Access

CKD Symposium for Primary Care

- with Kidney Foundation of Canada BC Branch

- Patients
- Knowledge

2013/14 Provincial Initiatives

Core Value(s)

Independent dialysis target maintained (>32%)

- Patients
- Optimal care

Home-hemo NxStage pilot project (assessment of pilot results underway)

- Knowledge
- Patients

PD Assist pilot launched: community links

- Patients
- Partnerships

Collaboration with BCIT to develop PD-focused education module for nephrology nursing program

- Knowledge
- Optimal Care

2013/14 Provincial Initiatives

Core Value(s)

Development of standardized, online, web-based PD training modules

- Patients
- Knowledge

Provincial GN Network and formulary launched (1st in Canada)

- Patients
- Knowledge
- Access

Revised anemia management protocols; continued cost savings

- Knowledge
- Solutions

PROMIS Modernization: Patient View launched; Strategy for integration/interface with HA systems

- Solutions

2013/14 Provincial Initiatives

Core
Value(s)

End of Life Virtual Conference: Dr. Michael Germain

- Knowledge

Fellowships: Admin (pharmacy), home-based therapies

Kidney Smart & World Kidney Day Awareness Campaigns:

- ✓ over 4,000 British Columbians took our online kidney health assessment

- Knowledge

Regional Innovations

- Multiple quality improvement projects/initiatives across HA programs:
 - Value Add Funding (*see handouts in conference program*)
 - Posters at BCKD
 - www.bcrenalagency.ca > For Health Professionals > Research



HIGHLIGHTS FROM 2013-2014

Value Add Dollars from Industry
Support Innovation, Improve Renal Care

From projects focused on quality improvement and process redesign, to enhanced patient and staff education, value-added funds from provincial renal contracts negotiated by the BC Provincial Renal Agency (BCPRA) and Health Shared Services BC (HSSBC) improve care for patients and quality of work-life for kidney care providers across BC.

Although a portion of these funds are used at the provincial level to support cross-provincial initiatives of the BC renal network, the majority is allocated to health authority renal programs to meet diverse needs at the local level.

based learning tool to help guide CKD patients in their choice of future treatment options.

The learning tool was produced in partnership with the Kidney Care Advisory Committee and was pilot tested with patients in four centers across BC. Designed for use by renal educators working with CKD patients, the tool outlines the pros and cons associated with treatment options following kidney failure, and encourages enhanced dialogue. Provincial rollout is anticipated for Fall 2014.

PROMIS Modernization

Work continued in 2013/14 to re-focus PROMIS, the BC renal network's data management system, to better meet the needs of users and support quality renal



Health Authority Renal Programs
BC Children's Provincial Renal Program
Fraser Health
Interior Health
Island Health
Northern Health
Vancouver Coastal Health/ Providence Health Care



HIGHLIGHTS FROM 2013-2014

Value Add Dollars from Baxter Contract
Support Innovation, Improve Peritoneal
Dialysis Care

From projects focused on nursing outreach and home visits, to enhanced patient and staff education, value-added funds from a provincial contract negotiated by the BC Provincial Renal Agency (BCPRA) and Health Shared Services BC (HSSBC) with Baxter Corporation improved care for peritoneal dialysis (PD) patients and quality of work-life for clinicians across BC.

of focus and activity included the following:

- Collaboration with BCIT to develop a PD-focused education module for inclusion in their nephrology nursing program.
- Development of standardized provincial order forms to ensure all PD patients have access to needed PD products.
- Assessment of the feasibility and efficacy of home-based assistance options to support patients, such as the



The present and future

- **Improving patient access** to new drugs and therapies through participation in clinical trials
 - PEXIVAS
 - Studies in Glomerulonephritis (GN)
 - PreCLOT (TPA)
 - Transplant studies
- **Improving data accuracy** to help decision making
 - PROMIS modernization
 - eHealth Strategies

Challenges: Sustainability of...

- Environments
- Kidney function
- Health care services
- Research activities
- Educational activities
- Partnerships
 - ✧ Industry
 - ✧ Governments
 - ✧ Collaborators



Sustainability and renewal: People

PRA supported Fellowships 2013-14

- **Clinical Fellowships** - support of UBC training program
- **Administrative Fellowships** (full and part time)
 - Dr. Cliff Lo (Improving access & appropriate use of meds in CKD)
 - Helen Chiu (Quality Academy and EOL initiatives)
- **Clinical Renal Transplant Fellowship**
 - Thida Myint
- **Home Therapy Fellowships** (1 yr program)
 - Penny Hill
 - Orla Dunne (starting Jan 2015)
 - Catherine Brumby (starting April 2015)

Welcome: Nephrology Trainees

Adult Nephrology

Core Training Neph Fellows

- Elene van der Merwe (Y2)
- Mike Bevilacqua (Y2)
- Yangmin Zeng (Y2)
- Jacek Cieslak (Y1)
- Matthew Kadatz (Y1)
- (Sunmin) Elizabeth Lee (Y1)

Advanced Trainees

Hicham Hassan
David Langsford

Clinical Fellows Transplant

Claire Kennedy
Thida Myint

Pediatric Nephrology

- Eman Nooreddeen
- Sheetal Lad (starting Oct 2014)
- Christine Mincham (starting March 2015)

Congratulations: CNeph(C) Graduates

Fraser Health

- Martin Duffy
- Yu Jin Ham
- Elizabeth Ordillano
- Byunghae Park
- Homa Sadri
- Bernardine Wong-Mercado
- Janette Cobarrubias
- Bella Evangelista
- Rozina Jiwani
- Leanne Curtis
- Sharon Sheard
- Lailani Utayde

Interior Health

- Jacqueline Wiersema
- Katherine Donnelly
- Gwen Benty
- Margie Kensah

Northern Health

- Candy Mantua
- Caroline Babich
- Haley Hamm
- Judy Kopp
- Cheryl Stratton
- Allan Abellanoza

Providence Health

- Sandra Polsky
- Leilani Borja
- Leah Emmons
- Victoria Pickles
- Aki Tanaka
- Youngja Park

Vancouver Island Health

- Christy Dyck
- Susan Stonnell
- Amy Hunter
- Julia Caryk
- Colleen Slade
- Peggy Peppard

Thank you to those you do not see

- PROMIS team
 - Classic PROMIS
 - Modernization team
- Statisticians and Methodologists
 - Quality
 - Accountability
 - Research
- BCPRA Administrative Staff

Special Thank You: Donna Murphy-Burke

- Joined BCPRA in 2005: Leader, External Networks
- Commitment to patient-centred advocacy
- Dedication to provincial home hemodialysis, PD and EOL programs
- Will continue to serve kidney communities across Western Canada in new capacity

The BC Renal Network: What We Do

- Focus on patient outcomes
- Focus on knowledge translation
 - What we know \Rightarrow what we do
 - What works in the real world
- Focus on creating systems that optimize outcomes

*Thank you for your energy & commitment to
people living
with kidney disease*

- Over 300 people actively involved in our network:
 - BCPRA committees
 - Professional groups
- All of the health care team members directly contribute to patient wellness
- The BCPRA is us, working together !

The
Art and
SCIENCE
of KIDNEY
CARE



Enjoy the
conference!