

kidneyhealth.ca
manitoba renal program



WESTERN
CANADA

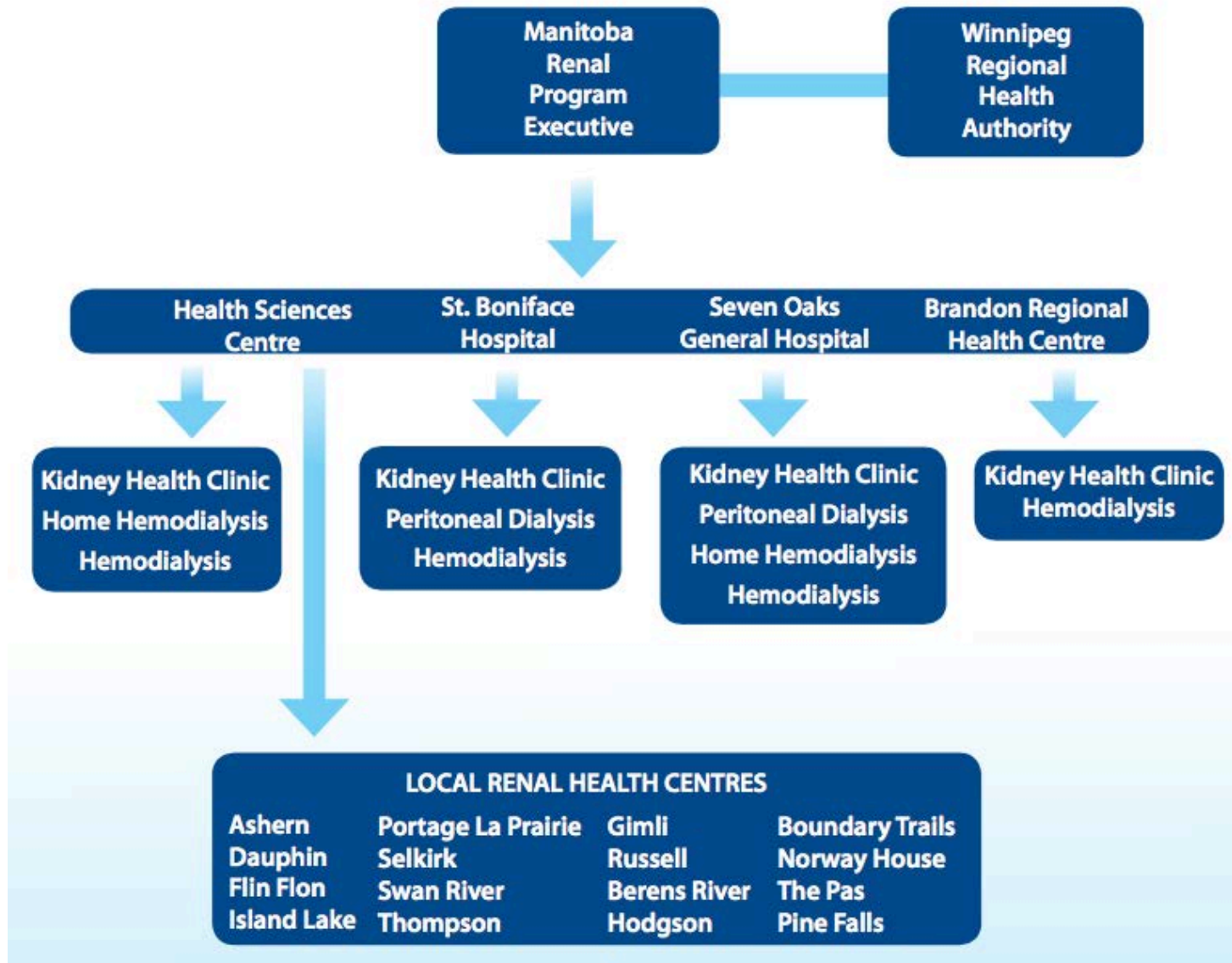
PD
DAYS

April 6-7, 2017

Manitoba Renal Program Update 2017

Henni Dyck, RN, BA, BN, MHS
Berlene Villanueva, RN, BN, cNeph(C)

Manitoba Renal Program Organizational Structure & Services



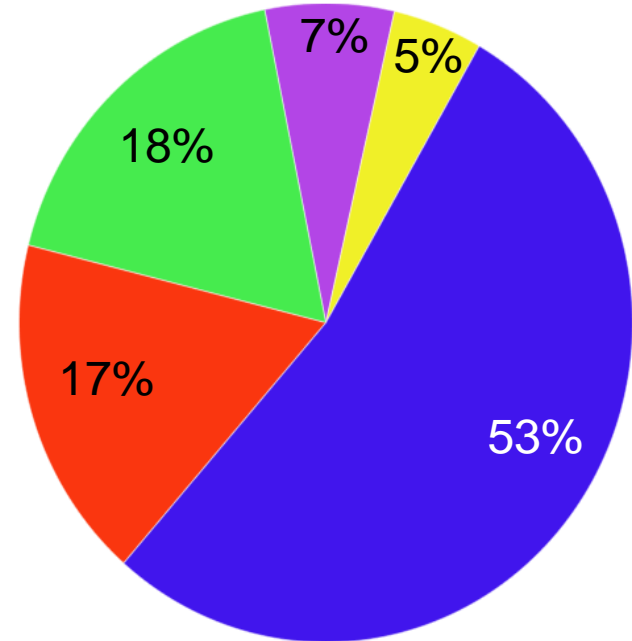
Renal Sites within Manitoba



Province Wide Growth

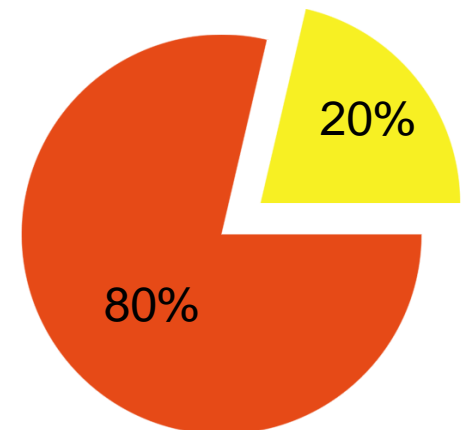
Summary of Patients
Dialyzing in Manitoba (Feb
10, 2017):

■	Winnipeg In-Centre Dialysis:	852
■	Home Peritoneal Dialysis:	280
■	Home Hemodialysis:	76
■	Local Centre In-Centre Dialysis:	287
■	Brandon In-Centre Dialysis:	109



Current Utilization of
Home Therapies:

■	Peritoneal Dialysis
■	Home Hemodialysis



PD Statistics

	Seven Oaks	St. Boniface
PD Patients in 2013	96	154
PD Patients in 2017	100	180
Peritonitis Rate	1:36	1:32
Exit Site Infections	1:52	1:72

PD Statistics

	2013	2016
PD Catheter Insertions	133	138
	<ul style="list-style-type: none">• Interventional (SOGH) - 33• SANA & General(SBGH) - 100	<ul style="list-style-type: none">• Interventional (SOGH/SBGH) - 62• SANA & General(SBGH) -76
Ascites Insertions		17
Removals		51
Repositions		9

Projects & Accomplishments

- Ascites catheter insertion
- Collaborative effort between SBGH/SOGH for timely catheter insertions
- Addition of 0.2 EFT procedure nurse (LPN) at SOGH to reflect increased growth
- Integration of 2nd vendor system and upgrades
- Increased PD Assessments to promote modality
- Clinic Model revision at SBGH to accommodate volume
- Assisted PD Program expansion

Areas of Focus for 2017

- Increased interventional insertions/extra GA slate monthly if required
- Initiating PD in PCH environment
- Increased focus targeting Filipino community (advocate PD)
- Proposal examining potential of assisted PD in rural communities
- Local nurse champions to promote modality/provide support
- Exploring PD training in groups
- Telehealth
- Approval for PD Unit in Brandon

Current Challenges and Frustrations 2017

- SOGH – space (PD/RH shared space/staff)
- SOGH - Lack of electronic patient record
- Paper based scheduling of appointments
- SBGH staffing (recruitment/retention)
- Funding challenges
- Provision of services for large geographical area

THANK YOU!

