

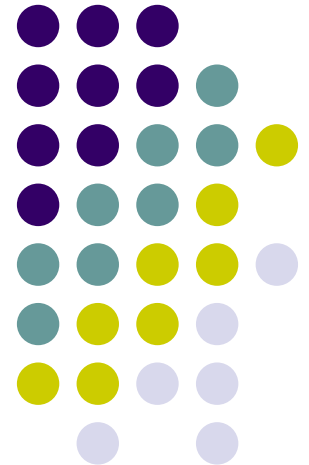


# Interior Health Renal Program

## Collaborating Across Boundaries

### The Kootenay Renal Distributed Care Network

A Pilot Project



# What is a Distributed Care Network?



- System of integrated resources to provide care across institutional or regional boundaries
- Levels:
  1. Physician shared care
  2. Clinical and IMIT resource coordination and management
  3. Cross-jurisdictional administrative and business support

# KB-EK Distributed Care Network



- **Level 1:** Shared medical care for CKD patients
  - Nephrologist in Trail – Internist in Cranbrook
- **Level 2:** One program, 2 sites
  - Trail (KBHSA) and Cranbrook (EKHSA)
- **Level 3:** Administrative and business support
  - To enable and support structures and processes that cross HSA Boundaries



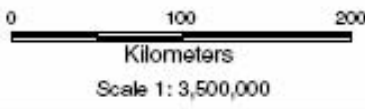
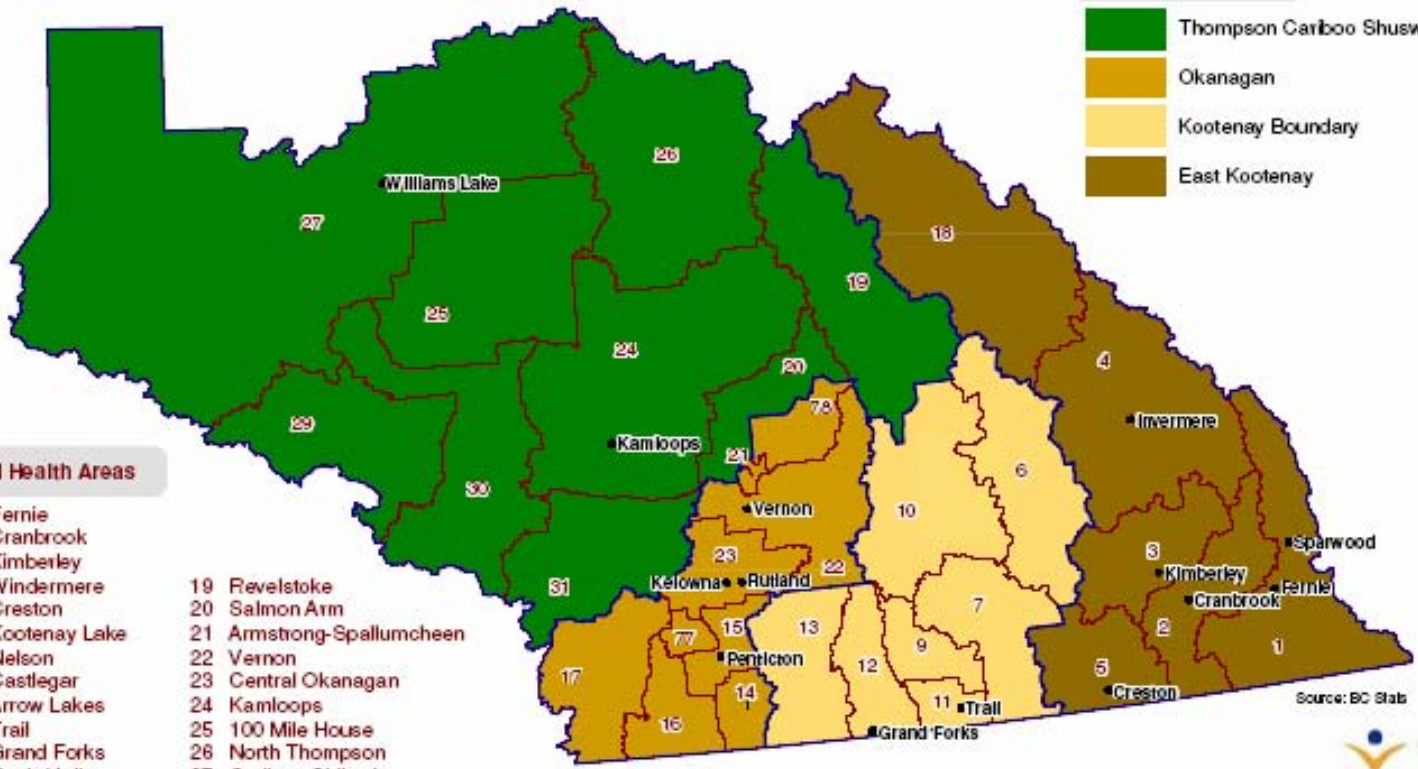
# Interior Health Authority Health Service Delivery Areas and Local Health Areas

## Health Service Areas

- Thompson Cariboo Shuswap
- Okanagan
- Kootenay Boundary
- East Kootenay

## Local Health Areas

- |                      |                           |
|----------------------|---------------------------|
| 1 Fernie             | 19 Revelstoke             |
| 2 Cranbrook          | 20 Salmon Arm             |
| 3 Kimberley          | 21 Armstrong-Spallumcheen |
| 4 Windermere         | 22 Vernon                 |
| 5 Creston            | 23 Central Okanagan       |
| 6 Kootenay Lake      | 24 Kamloops               |
| 7 Nelson             | 25 100 Mile House         |
| 9 Castlegar          | 26 North Thompson         |
| 10 Arrow Lakes       | 27 Cariboo-Chikotin       |
| 11 Trail             | 29 Lillooet               |
| 12 Grand Forks       | 30 South Cariboo          |
| 13 Kettle Valley     | 31 Merritt                |
| 14 Southern Okanagan | 77 Summerland             |
| 15 Penticton         | 78 Enderby                |
| 16 Keremeos          |                           |
| 17 Princeton         |                           |
| 18 Golden            |                           |



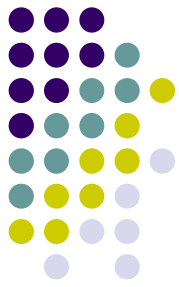
Source: BC Stats



Produced by Strategic Information October 23, 2005  
 Map is for representation purposes only. Interior Health  
 assumes neither responsibility for inconsistencies or  
 inaccuracies in the data nor liability for any damages of  
 any type arising from errors or omissions.

# The Impetus for Change

- Physical Barriers
- Recognized Access Gap
- Complaints
- Expectations

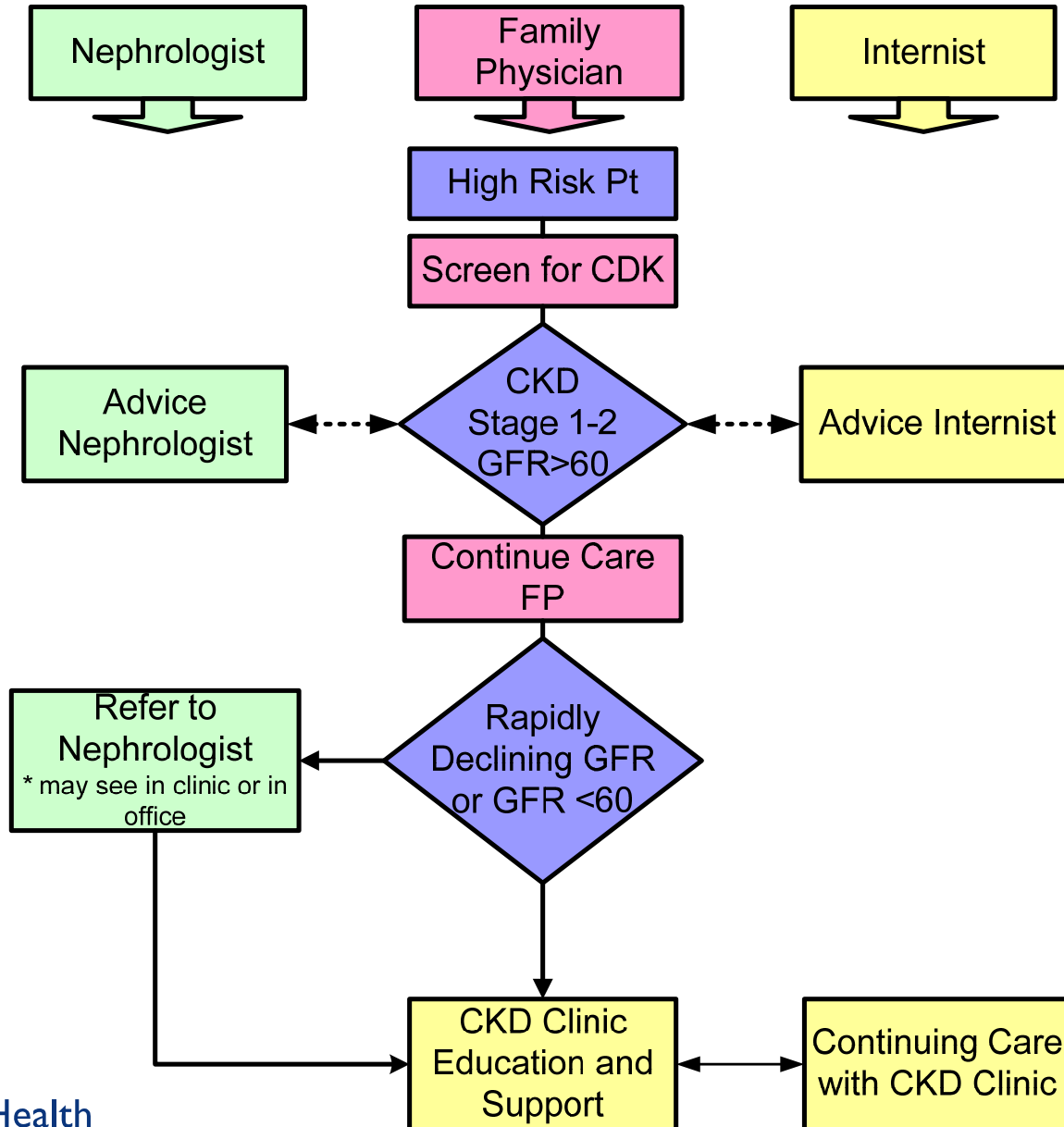




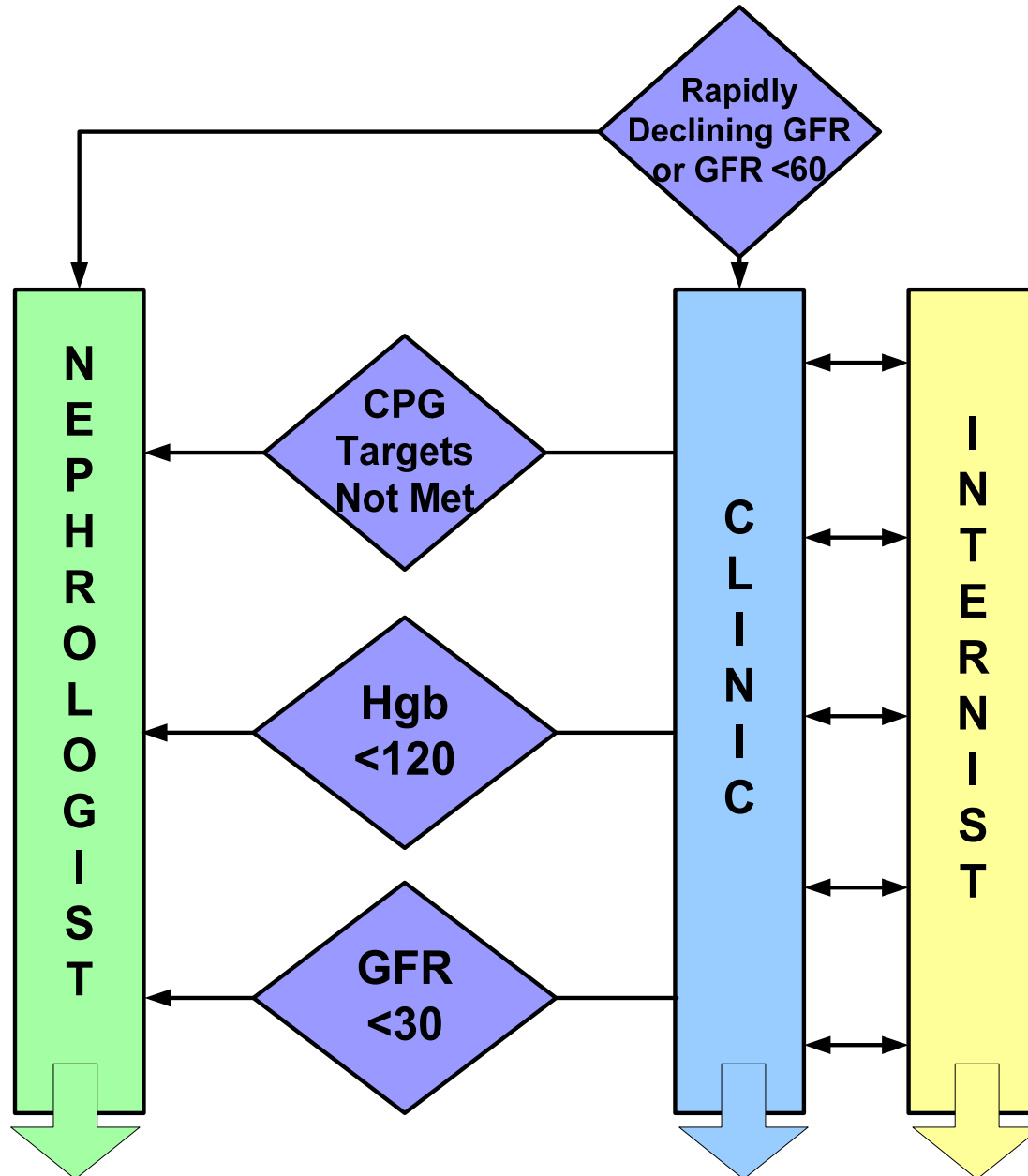
# Proposed Solution

- System Redesign based on CCM
  - Bridging 2 HSAs
  - Physician Shared Care – core
  - Clinical Team support – 2nd layer
  - Admin support – 3rd layer
  - Detailed agreement specifies roles and responsibilities of physicians
- Distributed  
Care  
Network**

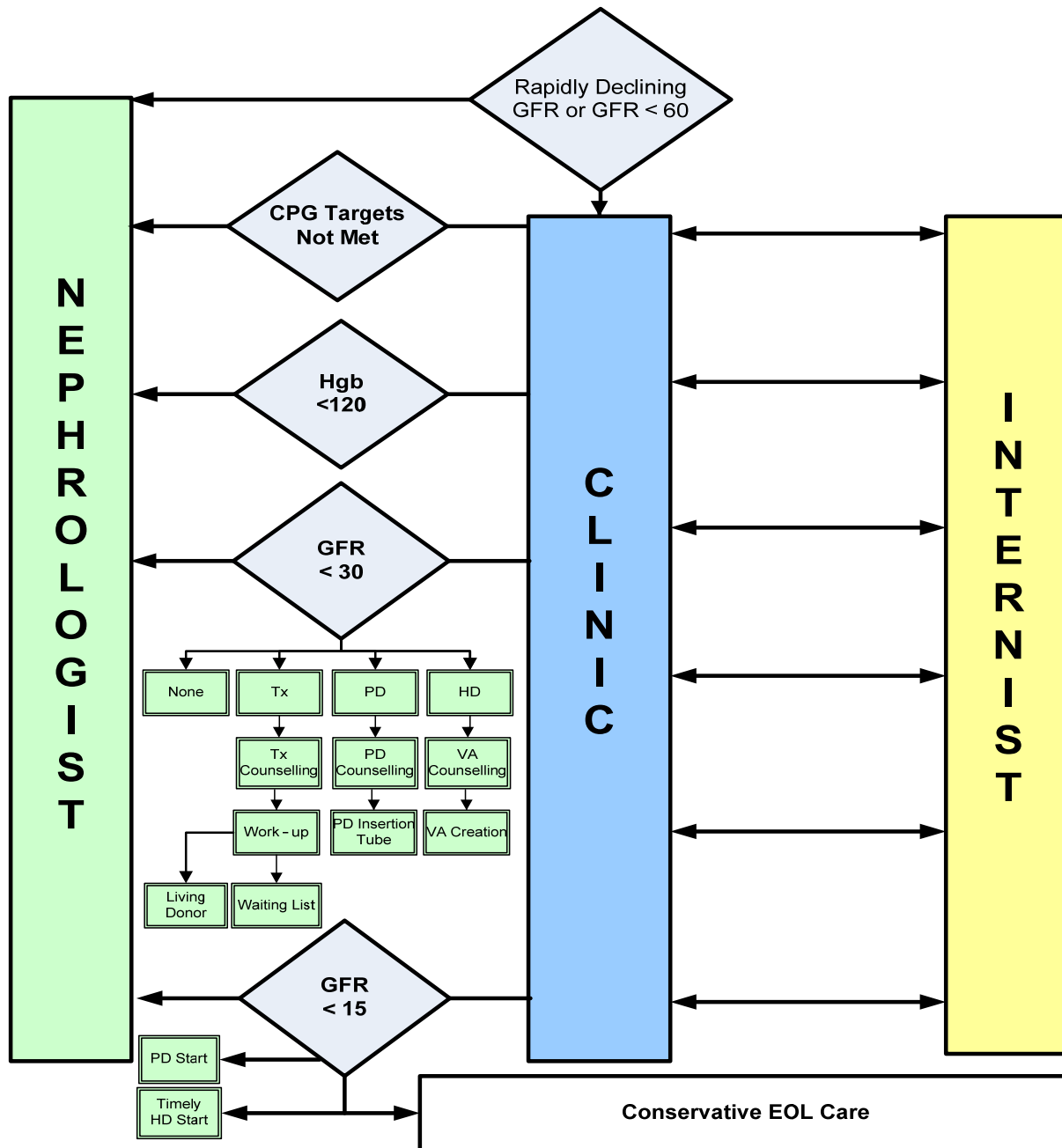
# CKD Shared Care Map (1)



# CKD Shared Care Map (2)



# CKD Shared Care Map (3)



# Process Is Critical to Success



- Identify Key Stakeholders
- Schedule Planning Retreat (August 2006)
- Face-to-face meetings pre-retreat
  - Focus on Principles and Shared Goals
- All-day facilitated planning retreat
  - Principles and Goals are the anchor
- Deliver agreement, work plan and evaluation plan

# Planning Retreat



- Stakeholder groups
  - KB Nephrologist and EK internists
  - Clinical Teams
  - Senior administration and business support
- 100% turnout
- Adoption of Shared Care Agreement by physicians
- Adoption of clinic structure and organization plan
- Commitment to provide necessary resources
- Written action plan



# Roll-Out

- Implementation date January, 2007
- Detailed Work Plan created at retreat
  - Communications
  - Evaluation
  - Clinic Location
  - Logistics
    - Resources
    - Scheduling
    - Org structure
    - Standards, guidelines and protocols
- Draft Charter in progress
- Need patient representative

# Current Status



- Resourcing issues are challenging
  - Loss of a Cranbrook Internist May 2007 places Shared Care component on hold
  - Clinic space in Cranbrook essential for sustainability
- Commitment continues by all parties
- DCN working well
- TeleRenal visits by nephrologist



# Conclusions

- Access challenge creates opportunity
- Shared Care can be specialist-specialist
- The details are critically important
- A Distributed Care Network must be created to support shared care for CDM
- High level administrative support is essential
- Good process enables success